

THE ROBIN HOOD WAY ASSOCIATION

Official Newsletter

www.robinhoodway.com

Summer 2011

Chairman: Chris Thompson

Treasurer: Allan Rogers

Secretary: Elizabeth Hague

Newsletter Editor: Elizabeth Hague

Compilation by Jenny & Rod Fillingham

Welcome to the summer edition of the Robin Hood Way Association Newsletter. Why such a full and formal welcome? Well, I am pleased to say that our newsletter is now being distributed far and wide to many more people outside of the original Robin Hood Way. This can only be good for us all by publicising our Association.

Have you also seen the article in the July edition of Life Magazine? Again the word is spreading as we always need a new supply of walkers to keep the Association going. This is the normal way of things for all organisations, so spread the word whenever you can.

As I sit here preparing this next edition I have no need to worry about not getting into the fresh air for my exercise. Two-thirds of the wall in my house was a very large, floor to ceiling, window. This has now suddenly become a hole, plenty of fresh air - and exercise? Well I am certainly getting that making endless cups of tea for the builders.

Whilst trying to work (and having to listen to their radio) a very appropriate song is playing. For those of you who are about my age do you remember a song called 'A good heart these days is hard to find' by Fergle Sharkey, well it is hard sometimes, but once again friends of the Robin Hood Way have done it again.

In the last newsletter I was very happy to report Bill and Carol, Allan and Kath and Stuart who all came forward as new wardens, now joining them I am pleased to welcome DIANE SMITH and BRENDA DRAPER. You see what a great lot members of the Robin Hood Way are.

ALSO - after many years as our Treasurer, David is to retire. A request last newsletter and there we are, another volunteer. ALLAN ROGERS has very kindly

offered to take over straight away to keep everything in order until our Annual General Meeting when he can officially be put forward for you to vote upon.

What great hearts you all have!

I hope you are all enjoying your walking so far this year. Last year I decided to go through my diary and record how many miles I walked, I managed 232 miles. This year I thought it would be fun to see if I could better this, well so far I have recorded 272 miles in half the year. Unfortunately at this moment I can hardly get up the stairs as I have damaged my knees very badly. However, I am sure it won't be long before I am out again.

So with this in mind I am going to launch a fun competition for you:

Category 1 - Who has walked the most miles in the year.
Category 2 - (For those who are not long distance walkers.) How many day/afternoon walks

have you done?

There will be a small prize for each category presented at the Annual General Meeting. So now you have been set a challenge let's see how you all do. (I am trusting on your honour so no cheating.)

Elizabeth Hague
Secretary & Editor

ROBIN HOOD WAY - Day One - Nottingham Castle to Kimberley

Joanna and I have been walking on a regular basis for just over a year, we love the fresh air, exercise and the excitement of finding new places and the freedom of the great British countryside.

Our good friend Elizabeth Hague (Robin Hood Way Secretary) suggested that we take on the challenge of walking the Robin Hood Way Trail over a period of time, so we thought YES - we are ready for the challenge.

A date was set and our first walk from Nottingham Castle to Kimberley, not quite knowing what to expect. We

were luckily joined by Elizabeth and Richard Gunn - at least we wouldn't get lost! We started by having our photograph taken at the Robin Hood Way plaque on the wall by the castle. The castle is quite spectacular. We proceeded down to the Trip to Jerusalem Pub (a well earned celebratory meal and drink will be had when we have completed the trail) and along the canal.

We were very lucky with the weather, it was cold but at this stage not raining. We continued walking along the canal passing by the Marina, encountering doggies and their owners. We left the canal heading to the

Nottingham University Park and walked alongside the lake. At coffee break time, sheltering in the trees from the rain, we were joined by a couple walking their PIG. Yes, I did say PIG. All of us were completely taken aback by this, most people walk a dog, not a PIG.

Well Barney the pig had us laughing as he wasn't going to move until he had dug up as many roots as possible. His owners tried to tempt him with treats but no, he wasn't budging.

After this very unusual sighting we headed towards the Sports and Social Club and onto Derby Road. We then entered into Wollaton Park. It was raining quite heavily now but it didn't spoil the beauty of this wonderful place, so quiet and tranquil but so surprising as situated in a city. We stopped to watch a few deer grazing in the distance.

Lunch time was now looming and Richard had decided we would stop in a lovely spot - a small park opposite the Hemlock Stone, so we continued on through a few residential streets, passing Bramcote Hills Golf Course and finally reaching the park.

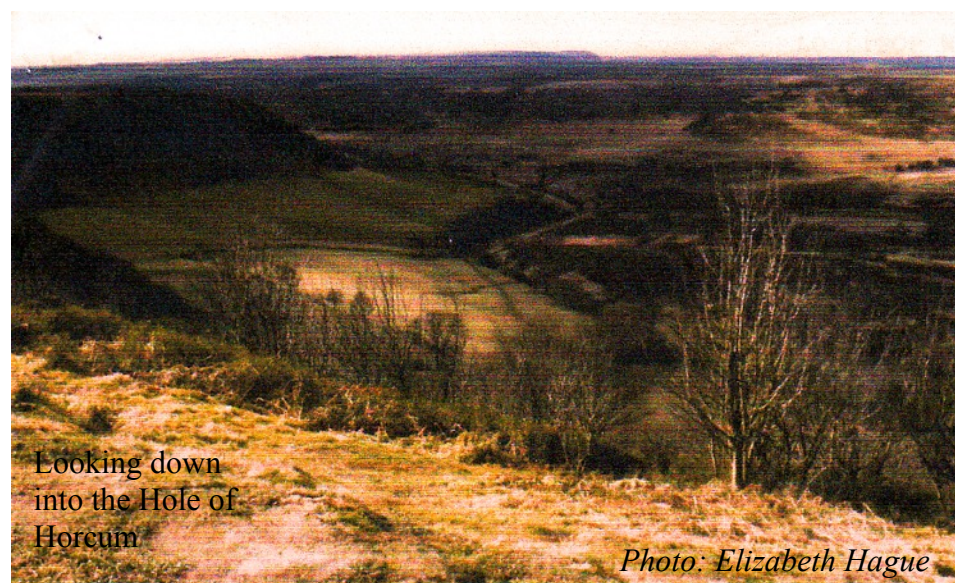
After lunch we walked uphill to the Hemlock Stone admiring the views of the three counties, plenty of photos were taken for the photo albums.

Now the rain had stopped and we headed on through the woods leading towards the villages of Trowell and

GIRLY WEEKEND IN THE NORTH YORK MOORS

Day One - Hole of Horcum

11th - 13th March 2011 Amanda, Joanna and myself set off on another of our 'girly' walking weekends. This time we headed for the Hole of Horcum, in the North



Looking down into the Hole of Horcum

Photo: Elizabeth Hague

Strelley. Many fields were passed through, they were extremely muddy so it took a long time and energy, we were sliding all over, to reach the villages but finally did.

Photo: Elizabeth Hague

Richard and Amanda at the Start of the walk



After another coffee break admiring the views, it was the last section to Kimberley. We finally reached Kimberley after a long enjoyable day, the feet were hurting but a great sense of achievement had by all and looking forward to the next walk - Walking the Robin Hood Way Trail.

Editorial: Amanda Manley

Yorks Moors. Our first stop was a visit into Pickering to visit the church with its famous murals and, of course, a hearty breakfast from the local cafe. Taking the main A169 towards Whitby, parking is easy at Grid Ref: 854 938 Outdoor Leisure 27, and the start of the walk into the Hole again is easy to find, the views were breath-taking. Following a route down into the Hole and passed Horcum Slack, Levisham Brow and finally erupting into Levisham Village, we all chose our cottage that we will one day have (when we are rich and famous) and moved off to the local pub. This is well worth a visit with excellent beers, food and accommodation.

Taking the Limpsey Gate Lane out of Levisham, we came out into the open moor overlooking the North Yorkshire moors Railway. Running

from Pickering to Grosmont and laid out by George Stevenson in 1836 originally for horse drawn trains. The line runs through Newtondale which is below and to our left (S.W.) After a snack at Skelton Tower we took the longer route back across the moors to the car park.

This is the type of walk for all walkers, as my mum did two-thirds of this walk when she was into her 90's. There are three routes on the top of the moors and one down into the 'hole', the walking is very good with very few stiles.

Our walk was 8½ miles, but as there are so many tracks upon the moors, this can easily be extended or shortened as you prefer.

Accommodation can be found in Whitby, approximately ¾ hour away, Pickering or Thornton-le-Dale, or in many of the villages. It is only about two hours drive from most parts of Nottinghamshire so why not give it a try, it is well worth the effort.

Day Two - Robin Hood Bay to Ravenscar - 11¼ miles

Starting from the car park in Robin Hood's Bay, the route is so very easy to follow along an old railway line, and again this walk can be shortened or extended if you wish to avoid the beach or cliff tops.

Starting on an easy climb up along the long incline of the railway, there are seats and even picnic tables at the top. The walk is pleasant through the trees with a view of the sea always nearby. We even saw deer browsing on the cliff side. Approaching the top it is possible to see the remains of the old alum quarries.

Ravenscar has recently been on the 'Coast' programme as 'the town that never was'. Plans were drawn up to build a whole new town on the top of the cliffs, plots had been sold, drains and other services laid and a small section of roadway made. However, the only houses to actually be built were a very small row of about five, one of which is a cafe. This was where we were making for only to find out at the top of the last climb - feeling hot, tired and

ready for a coffee, that it was closed. The only other place inviting us for a break was the rather impressive Ravenscar Hotel. This grand looking hotel does not mind a bit walkers (dirty or wet), coming in as long as you leave your boots in the hall entrance. Coffee was quite reasonably priced and the service was very good. Lovely gardens to walk in, right to the edge of the 211 metre high cliffs.

We decided to walk back along the cliff tops until Boggle Hole where we descended to the beach for the final stretch. Having checked the tide tables before we left we thought this would be safe, but after only a few minutes walking there was a small land-slide just a few feet from us.

The best bit - another beautiful walk, totally different from the day before, the worst bit - well! What goes down has to come back up. For those who don't know Robin Hood's Bay there is a rather challenging climb from the beach back up to the car parks.

Unfortunately unlike a rather famous walking magazine where everyone is on the company expenses, we were not. As we stayed out of season, we were able to find a

The Haunting Skelton Towers - where have the walkers vanished to?

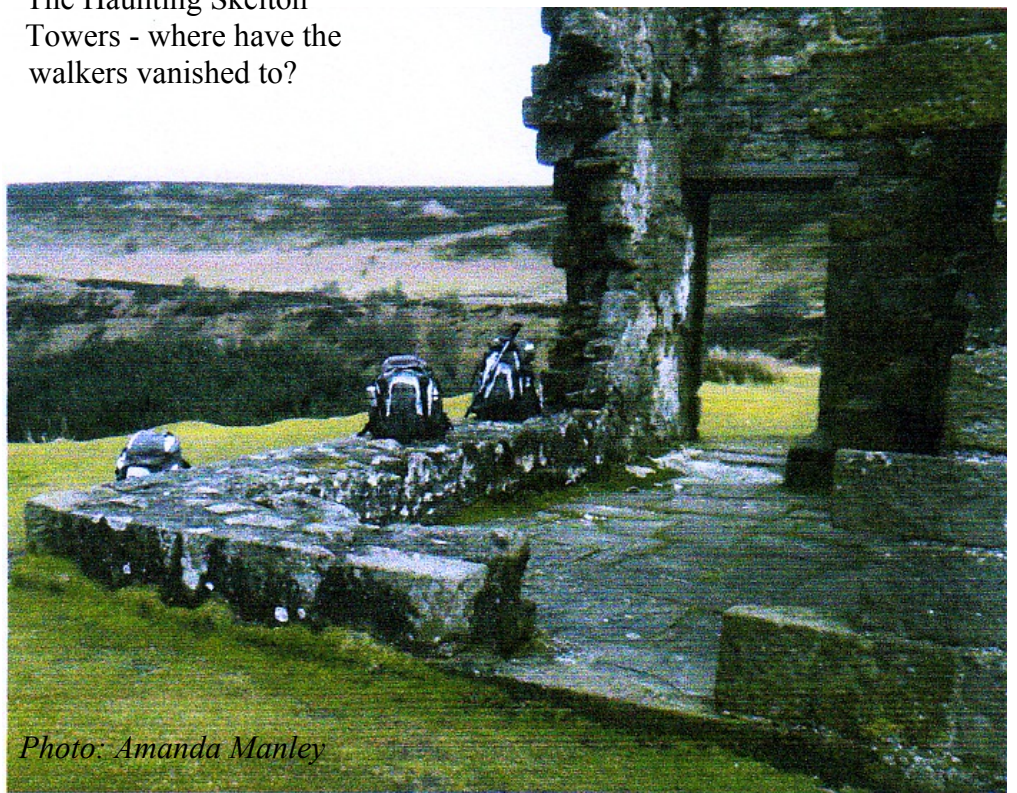


Photo: Amanda Manley

good hotel with breakfast, brought our own packed lunch and had our evening meals out - one at a very famous fish restaurant. We all could recommend the first course but don't bother with the dessert.

Elizabeth Hague

BUDDY

On the 26th March 14 walkers set off from the Dukeries Antique Centre for a six mile walk round Sherwood Forest. Arrangements had been made with the owners to use their car park in return for a snack or meal after our walk. However, some people already in the know, had got in early and had their breakfast there too!

Our walk into the forest was very pleasant with a short break at Centre Tree, then following a track to the south, then off to the east, ending at the visitor centre. Another short stop here to look round and use the facilities. Away once more through the trees towards our goal - afternoon tea. Whilst enjoying the peace and quiet of our day suddenly a rude awakening overhead. Two airplanes flying stunts! In fact this was quite entertaining to watch how close they were following each other.

Back to the Antique Centre now for a lovely cream tea with homemade cakes, well, when you use all that energy walking you do need to replenish it.

Elizabeth Hague
Secretary and Editor

LOLLIPOP WALK

Thursday 15th February starting from outside the stables at Thoresby Hall, I set off to meet Aubrey for my first lollipop walk. What was this strange new walk? Were we all going to have to go walking sucking lollipops? Aubrey had been asked to lead a party of walkers who had journeyed up from Essex for a week's stay at the hotel and to visit the area. Ah! That's it then, it must be an Essex thing. 34 of us were gradually herded together to form a more orderly unit and set off on a brand new newly opened path into Clumber Park. We crossed over the Robin Hood Way track at South Lodge and went on down to the bridge over the river Poulter which forms into the lake at Clumber Park, and from here we set off towards the remains of the house and gift shop. Walking along the edge of the lake a little further we saw the remains of the dock where a boat once used to come in. Walking back towards the cafe area we stopped here for our lunch (in the rain). After lunch, and of course when the rain stopped, we walked back towards the bridge along the lake side. From here we took another path running parallel with the outward path, back to South Lodge and back to Thoresby Hall. A lovely walk with a new section of path only just opened.

Oh! and the lollipop - if you haven't guessed yet, look at the next page for the answer.

Many thanks Aubrey for a splendid day out.

Whitby Abbey
The haunt of
Count Dracula



Photo: Elizabeth Hague

SALES OF THE NEW GUIDE BOOK

I am sure you are now all aware that the new Robin Hood Fourth Edition Guide Book is now available. At the moment we have a large stock of these books so if you know of anyone who would like one, they may purchase a copy from the Secretary at any time. The book is priced at £10.95 plus postage and package. (The book can also be purchased on the Robin Hood Way Website: www.robinhoodway.com) The book would make a good Christmas present for future walkers - maybe a niece or nephew, grandchildren or neighbours. The book is also available on Robin Hood Way Walks or social events and this would save you the postage and package charge.

The Robin Hood Way Committee is very anxious to get the book into shops, so if you know of a retail outlet who may be willing to purchase a few, we can supply as little as two or as many as a hundred. We do have a special retail price for any shops. The Treasurer Allan will be able to help you here. So if you could ask around or if you prefer, give the details to a Committee member and they will follow the lead on your behalf. Please help us, we do need to get sales.

ST GEORGE'S DAY WALK

Where were you on the 23rd April this year? Unfortunately I was off on a caving holiday in France but I know that ten of you were on the patriotic St George's Day Walk with our walk leaders Graham and Barbara Horlington. A walk round the lovely area near to Lowdham and Harlow Wood Farm, and the villages of Woodborough and Epperstone.

The weather was still a bit hit and miss, but a chance to see the beautiful bluebells in the woods has got to be a wonderful sight knowing that we have left winter well and truly behind and are now half-way into spring. Walking with Graham and Barbara is always a pleasure and I am so sorry to have missed out this year, I hope they will be offering another next year because I know I will be first to put my name down. Many, many thanks from everyone to you both.

AUBREY'S TEVERSAL WALKS



Photo: Elizabeth Hague

Remember this chap? If you have been on Aubrey's Teversal walks you will know where he is to be found.

I have it on expert authority - from a miner - that this is a perfect likeness.

He kneels on the highest (man-made) point in Nottinghamshire, and was seen as part of one of Aubrey's Clover or was it a Shamrock walks.

These start at the car park and the walk covers one loop and returns nearly to the start before going off again on another loop. Get the idea?

On the 5th June Aubrey provided us with another chance to join him, this time on a six mile loop. Now, was that one loop or two?

And the answer to the lollipop? The walk goes out from base, does a loop and returns to base on the same or parallel route.

AND FINALLY

During the early part of July, my friend and I completed the Hadrian's Wall Walk of 84 miles in six days. More details of our walk in the next issue but we did want to ask members if

anyone would like to donate to our chosen charity The Mountain Rescue.

We have received over £450.00 already and the website is still open for another two months. If you wish to donate you can also send a cheque made payable to: Mountain Rescue, c/o Amanda Manley at 2 Sunnyside, Worksop, Notts. S81 7LN. or let me have it and I will pass it on to her.

Thank you to all who have already helped us.

FUTURE EVENTS

Saturday 8th October 2011

Walk: 8 miles

SK 653 484

The walk starts at 10.00 am from Epperstone. On street parking near to the Cross Keys Public House.

Allan Rogers will be leading this walk from the little village of Epperstone and will follow lanes and bridleways via Far Barn to Halloughton then back over tracks and fields (which could be a bit muddy in parts) to Bankwood Farm.

Here there is an option to extend the walk to 10 miles via Rosselle Wood or return direct to Epperstone. Both routes back are along field paths and tracks. The distance will be an option depending who walks on the day. Allan's walks are always fun so why not give it a try.

Saturday 3rd December 2011

Walk - Dinner - Annual General Meeting

An early reminder to make sure you have the date for our end of year dinner.

Chris Thompson will organise the early morning walk which will leave the Ollerton House Hotel Car Park at 10.00 am.

The lunch will be a carvery as usual followed by the meeting at approximately 2.00 pm.

More details and a form will follow later in the year. If you have any matters you wish to be included on the Agenda please could you let the Secretary know as soon as possible. Thank you.

As this will be the final event for the Silver Jubilee Year of the Robin Hood Way please make a special effort to join us, for either the walk - lunch or meeting, or better still all three.

See you there.

Elizabeth Hague
Secretary & Editor